

# WINTERGREEN

A monthly update on Steven Winter Associates, Inc.'s work in the realm of Energy Efficient, Sustainable, and High-Performance Buildings

Volume 4, Issue 9

March 2003

## *Greening Philadelphia Housing*



“Rethinking Rehab: Building Better, Building Greener” was the theme of a Philadelphia house tour sponsored by the **Partnership for Advancing Technology in Housing (PATH)** and the Philadelphia chapter of **Habitat for Humanity** to showcase advanced framing techniques, energy-efficient insulation practice, and other innovative, sustainable strategies to enhance the environmental quality of urban rehab projects. Steven Winter Associates (SWA), as part of its work on the **U.S. Department of Housing and Urban Development’s PATH** program, helped organize the tour, which took place this month. A 1,200-square-foot Philadelphia Habitat rowhouse, still under construction, was the subject of the tour. This project is expected to be ENERGY STAR rated when complete, making it 25% more energy efficient than a traditionally built rowhouse. With helpful remarks from speakers such as HUD’s David Engel (left), tour participants learned how the Habitat team is reducing the cost of materials by incorporating advanced construction techniques, such as 24-inch-on-center framing; improving indoor air quality; controlling costs associated with the installation of plumbing and heating systems; and cutting energy costs with a variety of energy-conserving products and technologies. The rowhouse includes such PATH technologies as low-e, argon-filled windows; high-efficiency bath exhaust fan; fly-ash concrete; radiant floor heating; low-VOC finish paints; energy-efficient appliances; plastic plumbing manifold and PEX piping; structural drywall corners and drywall clips; non-structural headers; and optimum-value engineered design. All of these products and materials can be found in the **PATH** technology inventory on its website at: [www.pathnet.org](http://www.pathnet.org).

## *Greenies Invade the Bay State*

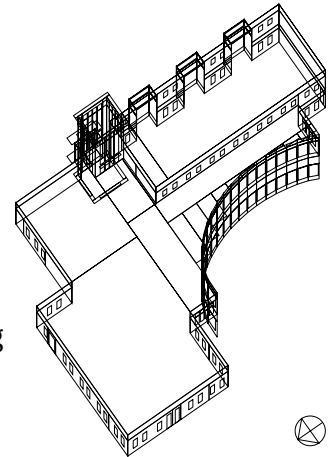
Attendance at the **Northeast Sustainable Energy Association (NESEA)** annual conference, Building Energy 2003, in Boston this month drew over 1,200 participants. The conference was held over four days with sessions, presentations, and schmoozing at the Boston Park Plaza Hotel and the campus of the Massachusetts Institute of Technology (MIT). Keynote speakers on the first



day included such luminaries as Massachusetts Governor Mitt Romney; the Director of the Massachusetts Technology Collaborative’s Renewable Energy Trust, Robert L. Pratt; and Worldwatch Institute President Christopher Flavin. Because of the record attendance, sessions were packed and participation was excellent. The conference provided useful information as well as an excellent networking opportunity for attendees. Among the sessions were several presented by SWA staff members. F.L. Andrew Padian and Charlotte Matthews participated in a full-day session on “Greening an Existing Facility” at an MIT chemistry lab designed by I.M. Pei, while William Zoeller spoke about “Opportunities and Pitfalls in Construction Detailing.” Matthews also chaired a panel discussion on “LEED and Environmental Performance Criteria for Labs,” using such labs as Guyot Hall at Princeton by Payette Associates (above), to illustrate the discussion.

## *Greater Than the Sum of Its EEMs*

The guiding principle of “whole-building design” is that the cumulative effect of individual sustainable strategies will be greater than the sum of those strategies. This means that the whole-building approach has a synergy that results in greater energy savings. An example of this approach is an energy analysis that SWA recently undertook for the **Long Island Power Authority (LIPA)**. SWA conducted an energy analysis of a proposed 46,000 square foot public library for South Huntington, New York, designed by **Todd Harvey**. Using the analysis, the design team can better select cost-effective energy efficiency measures (EEMs) and quantifying the cumulative benefit of these measures over the life of the building. SWA’s work was performed under LIPA’s **Commercial Construction Program (CCP)** under the provisions of its Whole Building approach. Several EEMs were taken into account, including: low-e glazing, high-efficiency lighting, daylight dimming controls, occupancy sensors, high-efficiency packaged units, enthalpy control, night thermostat setback, a discharge temperature reset, and warmest zone reset. SWA estimates that by incorporating several EEMs into the building, the library could save approximately \$42,000 (versus merely meeting New York State code requirements) and qualify for an estimated annual incentive under LIPAs CCP of \$109,700 . Construction is scheduled for completion by summer 2004.



## *Melrose II Wins NESEA Award*

As part of the NESEA conference (see story on page 1) the organization presented the annual Northeast Green Building Awards to recognize outstanding achievements of high-performance architecture in the Northeastern U.S. Projects considered for this year’s awards had to be completed between January 1, 1998 and January 1, 2003, and could be either new construction or renovation. First prize in one of the five categories, “Residences,” went to Melrose Commons II in the Bronx, New York, a neighborhood of 30 three-family homes developed by **MCII Associates** and designed by architect **David Danois Architects, PC**, which received the first affordable housing ENERGY STAR rating by the **New York State Energy Research and Development Authority (NYSERDA)**. The project was part of SWA’s Consortium for Advanced Residential Buildings (CARB), one of the teams sponsored by the **U.S. Department of Energy’s Building America** program. In making its selections, the awards jury emphasized architectural form that integrates energy efficiency, renewable energy systems, sensitivity to natural surroundings, and the health of the building for occupants, along with the environmental impact of materials, construction, and operation. The award, presented at an awards lunch, was accepted by Les Bluestone of MCII Associates (which is also a CARB partner).

## *WinterGREEN will be online only!*

For more information  
visit the SWA Website:  
[www.swinter.com](http://www.swinter.com)

This is the last faxed issue *WinterGREEN*. Starting next month, *WinterGREEN* will be available online only. Fax distribution will cease. Email notices will continue to be sent out alerting you to the availability of the latest issue. If you are currently receiving a fax copy of *WinterGREEN* and would like to continue to receive the newsletter, you must email [newsletters@swinter.com](mailto:newsletters@swinter.com) from the email account to which you would like *WinterGREEN* forwarded each month. Please include “Subscribe *WinterGREEN*” in the subject line.

*WinterGREEN* is published monthly by Steven Winter Associates, Inc., 50 Washington Street, Norwalk, CT 06854. SWA is solely responsible for content and cost of publication. If you prefer to receive *WinterGREEN* by email, or for further information contact Michael J. Crosbie at SWA, phone 203-857-0200 ext. 210, fax 203-852-0741, e-mail: [mcrosbie@swinter.com](mailto:mcrosbie@swinter.com). Visit us at [www.swinter.com](http://www.swinter.com).