



“Careful zoning allows for quiet and noisy recreational areas to co-exist and directs attention towards outdoor amenities”

Steven Winter Associates, Inc.

Carillon Lakes Community Center

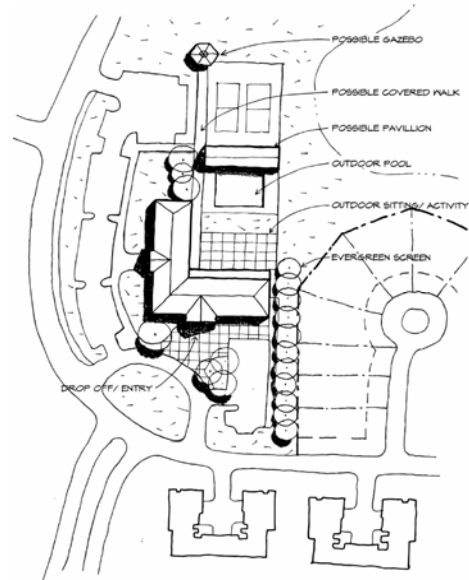
Huntley, IL

Project Data:

Senior’s Community Center

A 16,000 sf. multi-use facility providing recreational, social and instructional activities and amenities for an age-restricted residential subdivision of approximately 1200 dwellings. The design, meant to be welcoming and non-institutional, aggregates a wide variety of the program requirement into an easily-understood and simple-to-construct building that carefully zones administrative, quiet and noisy recreational areas while preserving maximum flexibility. The building’s orientation screens the outdoor activities from adjacent streets and parking areas and directs the interior and exterior spaces towards the outdoor amenities and the extensively landscaped grounds culminating in a large man-made lake.

The building is designed to promote extensive daylight and views from all major activity, administration and public circulation spaces. The wood-frame structure is carefully designed to minimize resource use and simplify fabrication. The building envelope includes high-performance glazing, increased insulation and air-infiltration reduction measures.



Client: Carillon Lakes Home Owner’s Association

Location: Huntley, IL

Building Type: Mixed-use facility

Building Size: 16,000 sf.

Project Status: Completed

Reference: www.carillonlakes.info

SWA Contact: Christoph Weigel
cweigel@swinter.com